

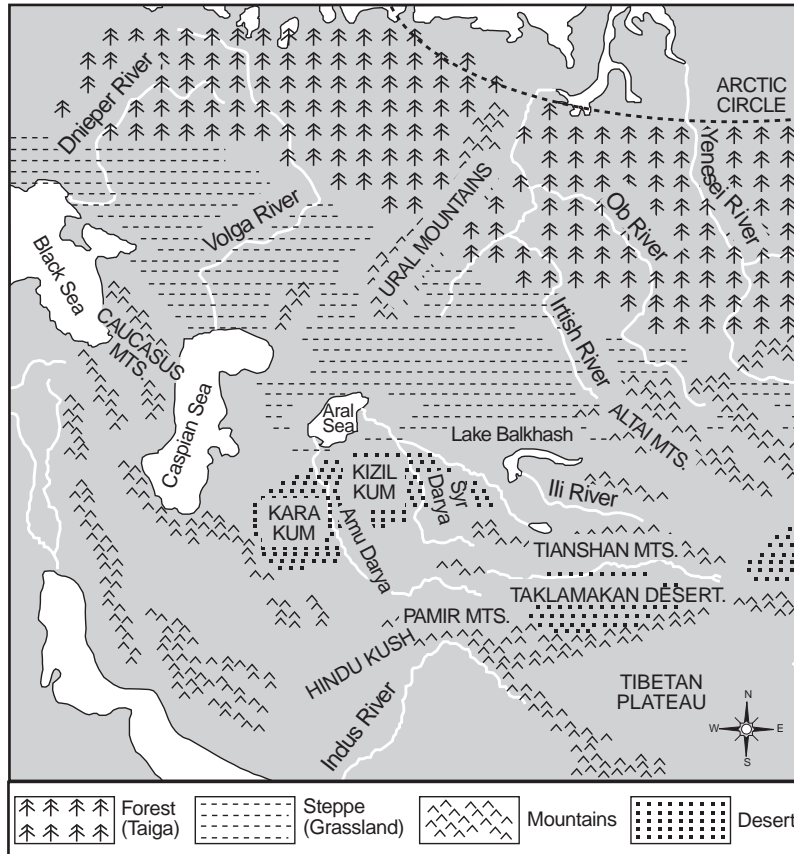
Part I

Answer all questions in this part.

Directions (1–50): For each statement or question, record on your separate answer sheet the *number* of the word or expression that, of those given, best completes the statement or answers the question.

Base your answer to question 1 on the map below and on your knowledge of social studies.

Inner Asia's Major Ecological Zones



Source: *From Silk to Oil: Cross-Cultural Connections Along the Silk Roads*, China Institute, 2005 (adapted)

- 1 Which modification to the environment would most likely need to be made to grow cotton in the region directly south of the Aral Sea?
- (1) Terraces would need to be constructed.
 - (2) Irrigation systems would need to be established.
 - (3) Desalination plants would need to be built.
 - (4) Floating gardens would need to be developed.

- 2 Historians need to determine the authenticity of a source in order to
- (1) establish its usefulness
 - (2) reinforce popular opinion
 - (3) demonstrate the significance of religious beliefs
 - (4) determine the characteristics of propaganda

- 3 In a traditional economy, habits, customs, and rituals function as
- (1) territorial boundaries
 - (2) incentives to change
 - (3) independent theories
 - (4) primary considerations in decision making

4 Which title best completes the partial outline below?

- I. _____
- A. City-states depended on goods exchanged directly with Mediterranean peoples
 - B. Political loyalty centered on the city-state
 - C. A common enemy, Persia, threatened city-states' autonomy

- (1) Features of Gupta Empire
- (2) Attributes of Indus Valley Civilizations
- (3) Characteristics of Ancient Greece
- (4) Traits of Ancient China

5 The Hellenistic culture, associated with the rule of Alexander the Great, developed as a result of

- (1) ethnocentrism
- (2) cultural diffusion
- (3) direct democracy
- (4) embargoes

6 The pyramids of ancient Mesoamerica and the aqueducts of ancient Rome demonstrate that these early civilizations

- (1) used large wooden structures for protection
- (2) practiced religious toleration
- (3) were able to prevent flooding
- (4) had advanced technology

7 One similarity between Confucianism and Christianity is that both belief systems emphasize

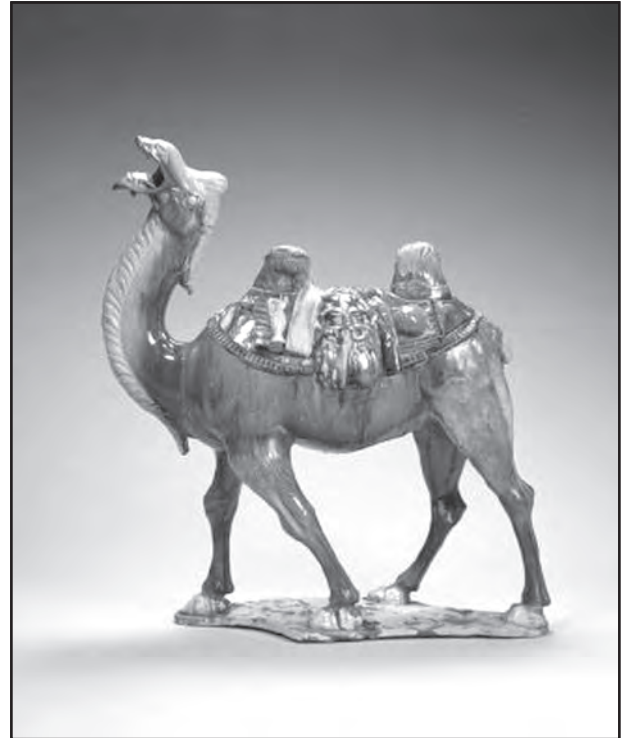
- (1) respecting others
- (2) praying five times a day
- (3) converting others to their teachings
- (4) making pilgrimages to holy shrines

8 Interactions between the Byzantine Empire and Kievan Russia influenced the Russians to

- (1) recognize the absolute political authority of the Pope
- (2) adopt Orthodox Christianity
- (3) call for an alliance with the Muslims
- (4) terrorize Charlemagne's empire

Base your answer to question 9 on the artifact below and on your knowledge of social studies.

Artifact from the Tang Dynasty



Source: The Avery Brundage Collection, Asian Art Museum online

9 In what way does this artifact represent the culture of the Tang dynasty?

- (1) Camels were used by traders along the Silk Roads.
- (2) Decorative ceramics were primarily imported from Japan.
- (3) Farmers used camels to plow fields in the Gobi Desert region.
- (4) Iron stirrups were developed and traded with the Mongols.

10 Throughout Japan's early history, a major factor contributing to its ability to resist invasion was its

- (1) island location
- (2) superior military technology
- (3) alliances with neighbors on the continent
- (4) decentralized government structures

Base your answer to question 11 on the passage below and on your knowledge of social studies.

. . . The impact of the pandemic on Christian Europe is fairly well known since the Black Death has been the subject of considerable scholarly attention. This interest has led to a misconception of the Black Death as primarily a European phenomenon. Regrettably, the Black Death in the Orient has not attracted a comparable interest, but this neglect should not be interpreted as an indication of its lack of historical significance. The famous fourteenth-century Muslim historian, Ibn Khaldūn, who lost his parents and a number of his teachers during the Black Death in Tunis, recognized the import of the pandemic for Islamic civilization: . . .

— Michael W. Dols, *Viator* (adapted)

- 11 Which statement expresses the author's argument regarding misconceptions related to the Black Death?
- (1) Primary sources have been difficult to find.
 - (2) Testimonies about the Black Death are unreliable.
 - (3) The causes of the Black Death are not understood by historians.
 - (4) Historical study has focused more on one region rather than on others.
-
- 12 The influence of Greek and Roman culture on some Renaissance art is reflected in
- (1) a realistic portrayal of the human body
 - (2) challenges made to ancient religious ideals
 - (3) the impact of William Shakespeare's writing in southern Europe
 - (4) competition promoted between northern and southern European artists
- 13 Which situation was a direct result of the Protestant Reformation in western Europe?
- (1) The Pope was removed as leader of the Catholic Church.
 - (2) The religions of the people of Europe became more diverse.
 - (3) Women assumed leadership in most Christian denominations.
 - (4) European rulers established religious freedom for their subjects.
- 14 Knowledge about trade wind patterns and the ability of sailors to utilize them on the Indian and Atlantic Oceans demonstrate that
- (1) government monopolies affect trade
 - (2) geography and technology influence economic activity
 - (3) economic concepts dominate the study of transportation
 - (4) laws and customs regulate exchanges across international waters
- 15 The Spanish *encomienda* system established in the Spanish colonies of Latin America was most similar to European
- (1) guild systems
 - (2) joint stock companies
 - (3) subsistence agriculture
 - (4) feudal land grants
- 16 Which statement about Louis XIV is an opinion rather than a fact?
- (1) He insisted that Huguenots convert to Catholicism.
 - (2) He strengthened the monarchy by centralizing the government.
 - (3) The wars he engaged in were the least successful in the history of France.
 - (4) The palace he built at Versailles was part of his plan for controlling the nobles.
- 17 The idea that all people are born with the natural rights of life, liberty, and property is most directly associated with the writings of
- (1) Baron de Montesquieu
 - (2) Thomas Hobbes
 - (3) Jacques-Bénigne Bossuet
 - (4) John Locke
- 18 What influence did the Scientific Revolution have on the Enlightenment in Europe?
- (1) Natural laws were used to explain human affairs.
 - (2) Economic growth was slowed by the lack of useable technology.
 - (3) Scientific truths were used to justify absolute monarchies.
 - (4) The emphasis on religious doctrine led to the rejection of scientific ideas.