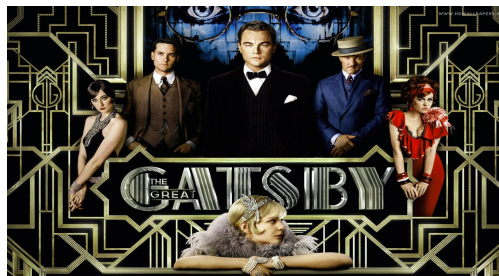


Welcome to 11R!!



THE GROUND RULES

- Attend class regularly with materials: appropriate books and always have a pen.
- Arrive to class on time
- Behave appropriately at all times.
- Be responsible for making up work missed during absences according to district policy.
- Respect the rights of everyone in the class.
- Come see us if you are having difficulty with anything



HOMEWORK POLICY

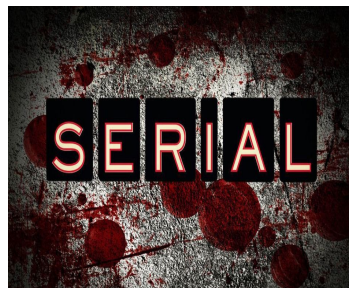
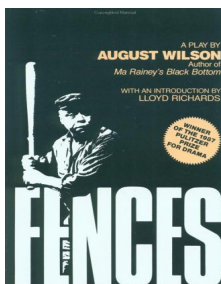
- There will always be something you are reading or writing, so you will always have homework.
- We may begin an essay in class and it might be due at a later date.
- Assignments will consist of readings (both fiction and non-fiction), and *Castle Learning*.

GRADING POLICY

- Your grade is based on: tests/quizzes, essays/projects, class participation and homework.
- Your grades will be computed by a grading system known as "Infinite Campus".

Remember that it is your responsibility to make up any missed work!

Writing, tests, projects and presentations	60%
Class work, class participation, quizzes & homework	40%



CONTACT INFO

- Chase:
 - Email: meaghanchase@wpcsd.k12.ny.us
 - Website: <http://www.wpcsd.k12.ny.us/Domain/1854>
 - Daily Schedule:

Period	Location	Class
1	C105	English 11R
2	C105	English 11R
3		
4	C105	English 10H
5	Writing Center or H-Cafe	Duty
6		
7	C105	English 10H
8	C105	English 10R

- Brill:
 - Email: donaldrill@wpcsd.k12.ny.us
 - Website: <http://www.wpcsd.k12.ny.us/Domain/299>
 - Daily Schedule:

Period	Location	Class
1	C105	English 11R
2	C105	English 11R
3		
4	G104	English 10R
5	G104	English 10R
6	H-Cafe	Duty
7		
8	G104	English 10R

CONTACT INFO

- Chase:
 - Email: meaghanchase@wpcsd.k12.ny.us
 - Website: <http://www.wpcsd.k12.ny.us/Domain/1854>
 - Daily Schedule:

